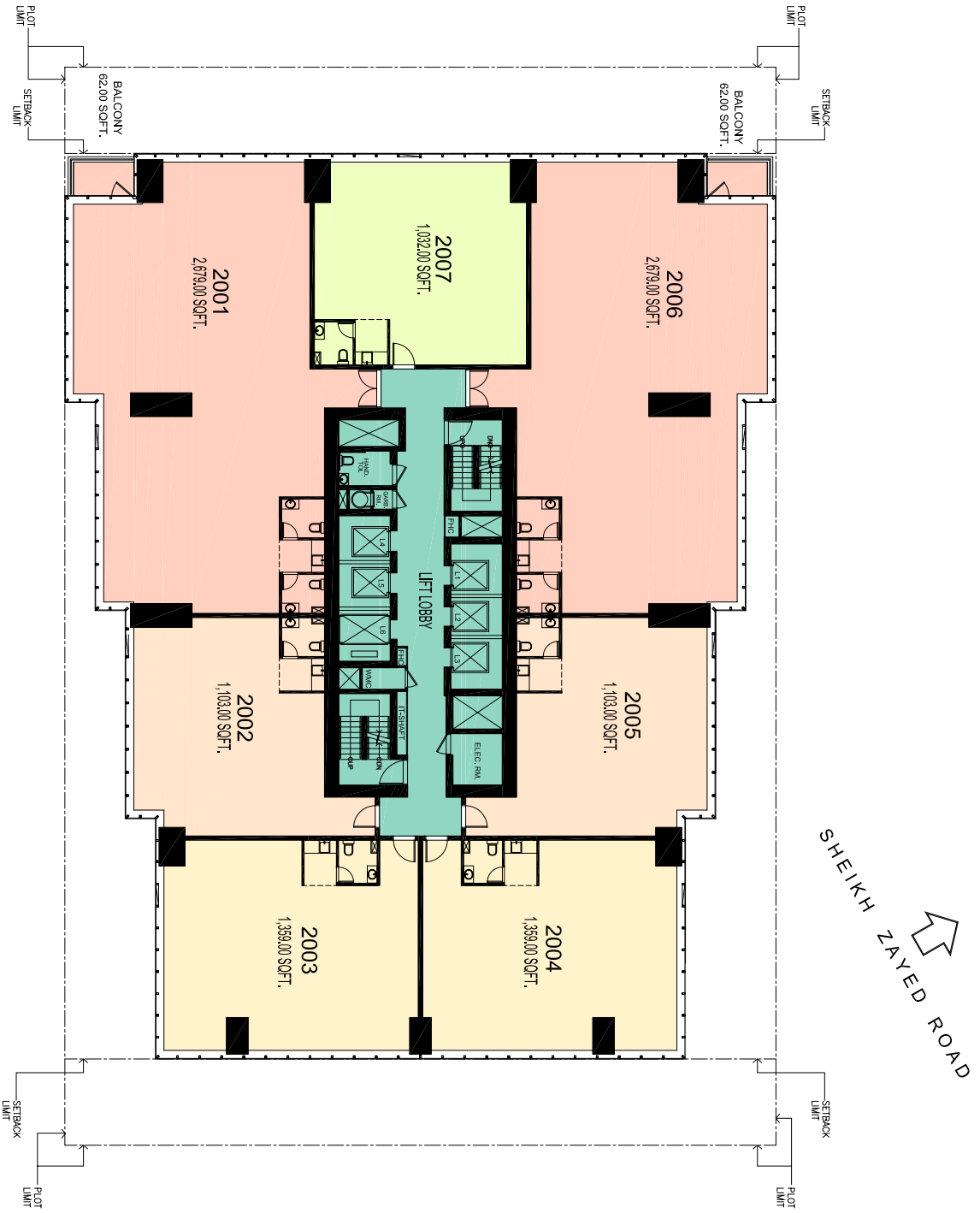




ROUNDBABOUT SIDE



4B+G+39+M COMM. +OFFICE BUILDING
on PLOT NO-Y1 (JBC 3)
JUMERAH LAKE TOWERS, DUBAI



CLIENT
AL FAIER PROPERTIES (L.L.C.)

DRAWING NO. SP-Y1-Z2
20TH FLOOR PLAN
21 MAY 2008